



GAT MONTHLY MEMBERSHIP PROGRESS REPORT

Results as of: 6/30/2023

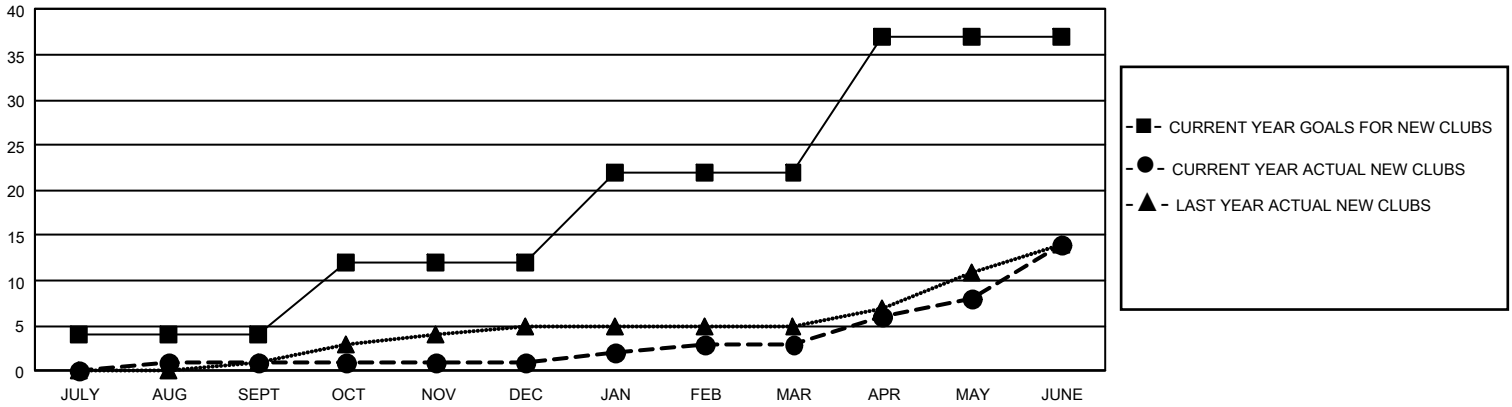
GMT Constitutional Area 4, Group D

REPORT DOES NOT INCLUDE CLUBS IN UNDISTRICTED AREAS.

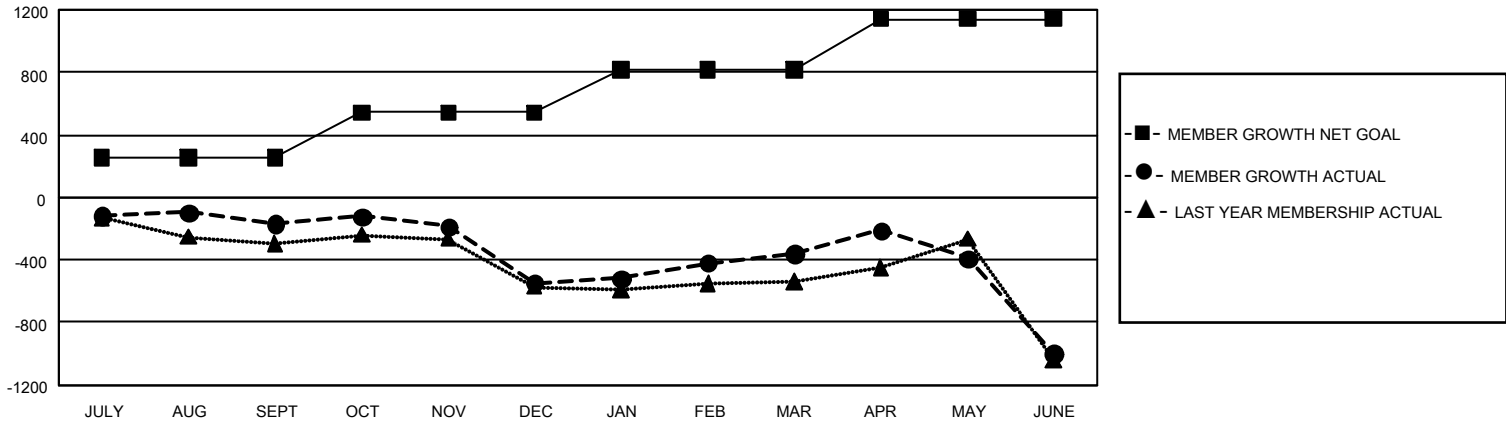
Clubs			
RESULTS FOR 2022-2023			
QUARTER	NEW CLUB GOAL	NEW CLUBS	DROPPED CLUBS
JULY/AUG/SEPT	12	1	15
OCT/NOV/DEC	24	0	11
JAN/FEB/MAR	30	2	8
APR/MAY/JUNE	45	11	13

Members			
RESULTS FOR 2022-2023			
QUARTER	MEMBER GROWTH NET GOAL	MEMBER GROWTH ACTUAL	DROPPED MEMBERS ACTUAL (including transfers)
JULY/AUG/SEPT	256	453	547
OCT/NOV/DEC	286	563	882
JAN/FEB/MAR	276	798	510
APR/MAY/JUNE	324	1,109	1,615

GOALS AND ACTUAL NEW CLUBS CUMULATIVE



GOALS AND ACTUAL MEMBERS CUMULATIVE



DROPPED CLUBS: 47	819 CLUBS OF 1,411 ADDED 1 OR MORE NEW MEMBERS	<u>GENDER DISTRIBUTION</u>	
		MALE 18,939 (68.71%) FEMALE 8,619 (31.27%) NON BINARY 1 (0.00%) PREFER NOT TO ANSWER 3 (0.01%)	
<u>DROPPED MEMBERS</u>		CLICK HERE FOR CUMULATIVE MEMBERSHIP DATA	
DECEASED 332 CLUB CANCELLED 157 OTHER 3,065 TOTAL 3,554	TOTAL FAMILY UNIT MEMBERS 2,657 FAMILY MEMBERS PAYING HALF DUES 1,366		